

Review of the Tools and Methods : Land - Surface Processes

Participants : 17

- **Question:** Do the '*Tools & Methods*' plans fit the requirements of the Land Surface Process group?
- **Outcome:** Recommendations to the '*Tools & Methods*' group

Data base

Models

Satellites

- **Presentations (2) :** Satellite activities at CESBIO and CETP

- **Satellites for land surfaces:**

What we want and what we plan to do with remote sensing:

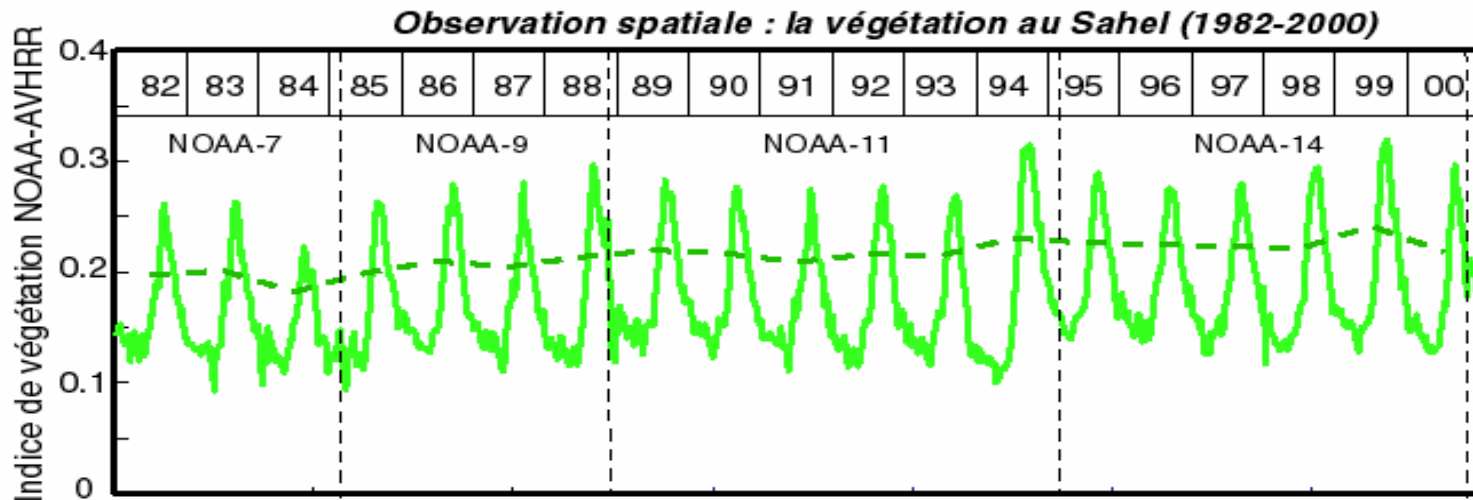
- Historical remote sensing time series (25 years) : Long term evolution
- New products (soil moisture, LAI etc) : Validation, use in assimilation
- Satellite derived land cover maps : Validation, use for up-scaling
- Seasonal LR & HR time series : Classification and model control
- Very High Resolution images : Parameter extraction (tree density)

Q: Are we satisfied with the AMMASAT data base?

A: Yes

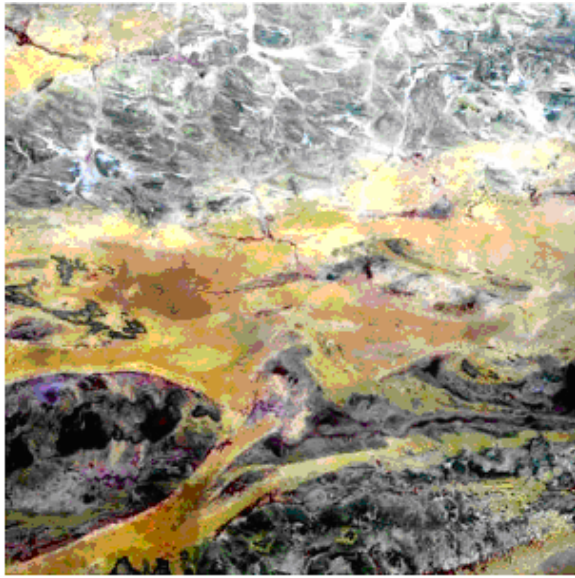
(Some critical needs were recently satisfied thanks to CNES support)

Reprocessing Long-term AVHRR time series

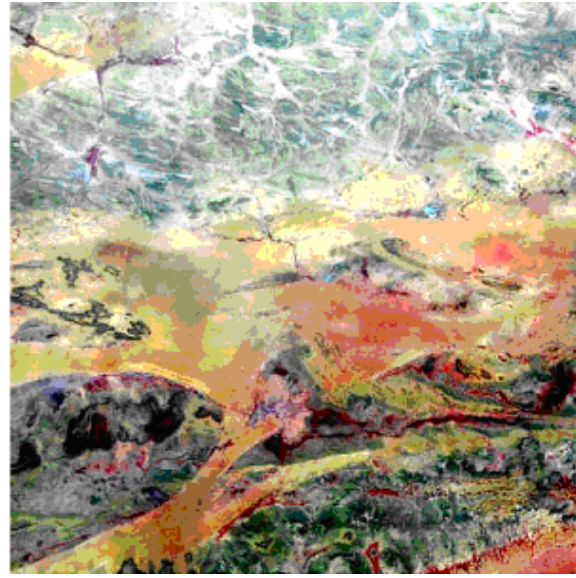


Planned activities for historical archive

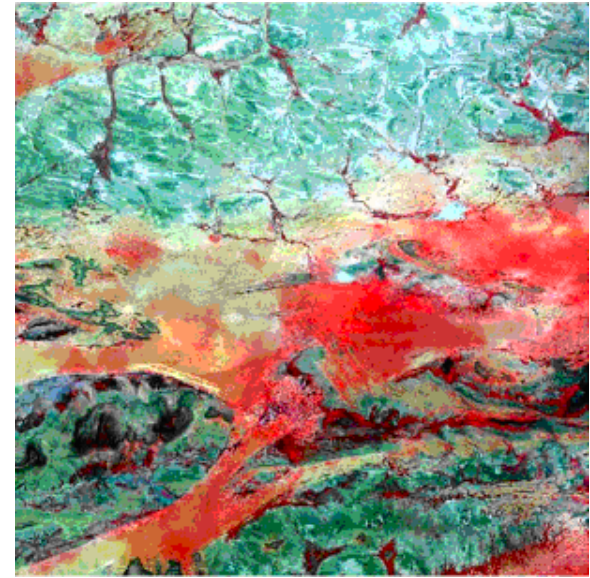
Re-processing of AVHRR GAC data (8km). French API / POSTEL
Remove drift effect.



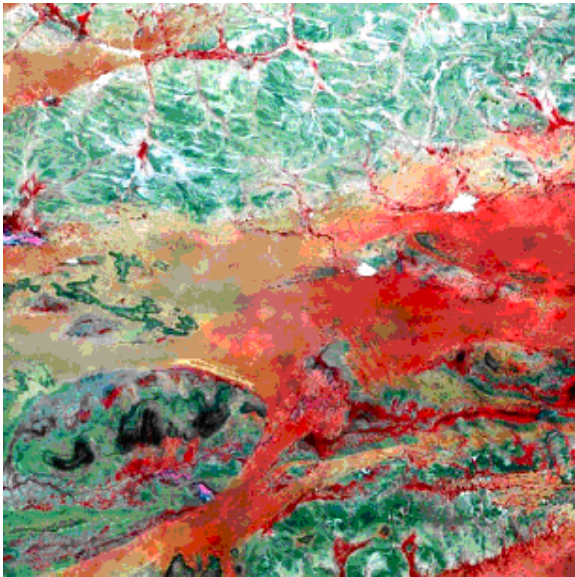
June 05, 2005



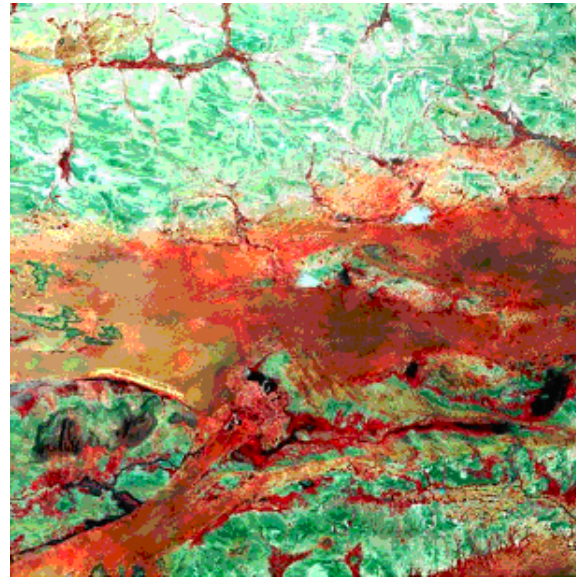
July 06, 2005



July 27, 2005



August 06,



August 22,

**HR seasonal
time series
(2005 – 2006)**

Mesoscale sites

Parallel meeting of disciplines : Land - Surface Processes

Recommendations/Requirements to the Satellite group

- **HR resolution** acquisitions (SPOT and Landsat) over the meso-scale sites should be **extended to 2007** in order to get a full coverage of the EOP.
- Importance of **validation campaigns** for land surface products (soil moisture, vegetation, surface temperature, rainfall) and radiation products.
- Integration of **HR resolution images** in the data base (no present plan).
- Importance to have access to **SPOT/VEGETATION** data in a quasi real time (10 days after their acquisitions as **MODIS** data) instead of 3 months (links with the impacts – Food Security -)